



kabcokitchens.com
DISTRIBUTED BY KABCO KITCHENS INC.

XL PYRAMID 440 ST



Standard



Lamp/Umbrella with central pole



High-tenacity 6005 aluminum alloy frame



Telescopic opening and closing above the tables



Opening and closing assisted by gas springs and nautical pulley with locking system - **SPINLOCK**



Nr°4 Panels made of PMMA (polycarbonate) with satin finish and back-lighted with LED Kit including remote control and automatic light intensity controller



Interchangeable canopy in white fabric (**MODULAR CANOPIES**)



Polished and anodised aluminum joints



Stainless steel bolts

Bases



Support bases



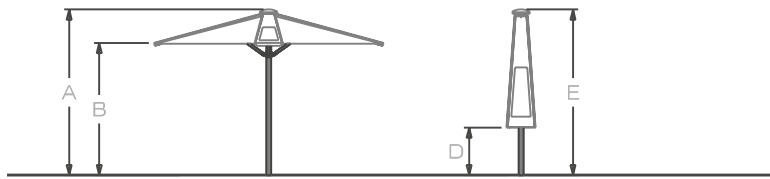
To be fixed



To be buried

PYRAMID 440 ST - TECHNICAL SHEET

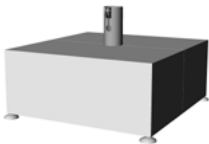
- STRUCTURE:** High-tenacity 6005 aluminum alloy frame painted with white epoxy powder
- PANELS:** Nr°4 Panels made of PMMA (polycarbonate) with satin finish and backlited with LED Kit including remote control and automatic light intensity controller
- SUPPORT CENTRAL POLE:** Rounded in aluminum diameter 100x3mm painted with epoxy powder and reinforced telescopic top diameter 55x2.5mm painted with epoxy powder
- SUPPORT RIBS:** Rounded in aluminum diameter 40x2mm painted with epoxy powder
- JOINTS:** Polished and anodized aluminum
- OPENING AND CLOSURE SYSTEM:** Telescopic opening and closing above the tables assisted by gas springs and nautical pulley with locking system - SPINLOCK
- BOLTS:** Stainless steel bolts
- FABRICS:** Interchangeable canopy - MODULAR CANOPY in heavy nautical white Fabric 445 g / m² - Lacquering on both sides, fungicide treatment, leatherette embossing, further waterproofing on the back



PARASOL SIZE WHEN OPEN (IN)	HEIGHT				WEIGHT	PACKAGING SIZE	
	A	B	D	E		IN	LBS.
177" x 177"	117.3"	88.5"	52.7"	165.7"	216 lbs	IN 177"x70"x70"	LBS. 59.5

BASES

JOINTED SUPPORT BASE



33"x33"	≤ 25 Mq	9"	77 lbs	+50"	196" x 187" x 57"

IN GALVANIZED AND VARNISHED STEEL PREPARED FOR ACCOMMODATION OF 20 WASHED STONE PLATES. COMPLETE WITH ADJUSTABLE LEVELING FEET. COMPLETE WITH LOW SEAT CABINET TO HIDE BASE

BAP838320BIM

JOINTED BASE FOR PLATFORM / FLOOR FIXING



55"x66"	-	77"	8 Kg	+1	72.7" x 59.5" x 88"

FOR PLATFORM / FLOOR FIXING. IN GALVANIZED STEEL AND POWDER COATED. COMPLETE WITH CARTER TO HIDE BASE 88" x 72.7" x 72.7" x 13.2"

BFP2530BI

SET OF 6 ANCHOR BOLTS TO BE BURIED

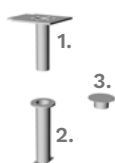


26.5"	-	99.2"	-	-	66" x 110" x 11"

SET TO BE BURIED OF 6 ANCHOR BOLTS FOR JOINTED BASES IN GALVANIZED STEEL TO BE EMBEDDED ON CONCRETE CASTING.

TIRM6

3-COMPONENT EARTHENWARE SET FOR JOINTED BASE



551" x 661"	-	-	12 Kg	+ 4.4"	72.5" x 66" x 92.5"

SET

1. FLAT IN ZINC COATED STEEL (Top side)
2. TUBE IN ZINC COATED STEEL (Lower part to be buried)
3. Diameter 90x400x1.5 Mm.

BACRT3

BAPCRT

BATFL

DISTRIBUTED BY KABCO KITCHENS INC.

KabCo Kitchens, INC. 4680 NW 74th Ave. Miami, FL 33166 (844)695-2226 www.kabcockitchens.com